

PLOOG ENGINEERING CO., INC.

Manufacturers of Testing Equipment

Phone: (219) 663-2854

Phone: (219) 663-1590

Fax: (219) 663-1373

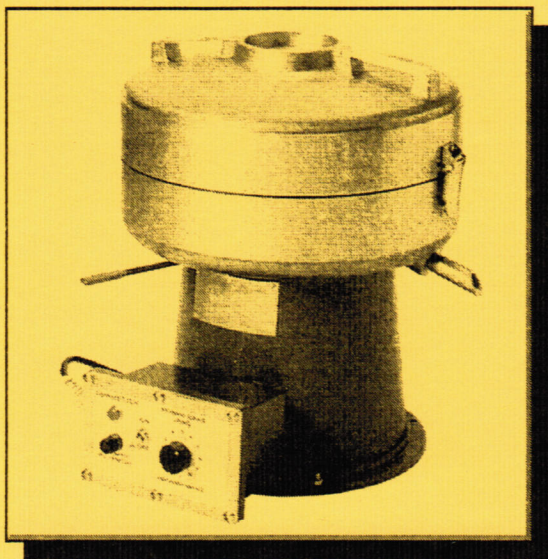
814 N. Indiana Ave.

Crown Point, In 46307

U.S.A.

Electric Centrifuge Extractor

Meets ASTM D2172



- Used to determine the amount of bitumin content in paving mixtures.
- Electric motor has integral, solid state, electronic speed control, which is adjustable from 0 to 3600 rpm.
- Includes hand operated braking mechanism.
- Use with either 1500 gram bowl or 3000 gram bowl.
- Available with standard motor, or optional explosion proof motor.
- 115 V is standard, 230 V also available.
- 100 filter papers included.

Ordering Information

		with 1500 g bowl	with 3000 g bowl
115 V	open motor	M205	M207
	explosion proof motor	MX205	MX207
230 V	open motor	M205-2	M207-2
	explosion proof motor	MX205-2	MX207-2

M255, extra 1500 gram bowl; M245, extra 1500 gram bowl cover

M257, extra 3000 gram bowl; M247, extra 3000 gram bowl cover

F265, extra filter papers for 1500 gram bowl (package of 100).

F267, extra filter papers for 3000 gram bowl (package of 100).

Ploog Engineering Co.,Inc.

814 N.Indiana Ave
Crown Point,In 46307-3447 USA
219-663-2854

OPERATING INSTRUCTIONS SERIES 5 EXTRACTORS WITH ELECTRONIC SPEED CONTROL

The Series 5 Extractor has a new electronic speed control EC 1020

After unpacking, bolt machine down to a suitable work bench.
The Power Cord should be plugged in to a receptacle of proper Voltage,
see Name Plate on Machine.

This Machine can be used with 3000 gram or 1500 gram Bowl.
Flip the Toggle Switch to the "ON" position, the pilot light should light up.
Set the Speed Knob to zero, then turn clockwise and set the knob
to the desired speed setting.

For 3000 gram set the Speed Knob up to "8".
For 1500 gram set the Speed Knob up to "10".

To stop Machine, flip Toggle Switch to "OFF" position.
Use the Brake to slow the Bowl down.

To re-start flip Toggle Switch on & adjust the speed.

EXTRACTOR PARTS LIST 1C, Series 5
FOR THE FOLLOWING MODELS WITH EC 1020 CONTROL
M205,MX205, M207,MX207, M205.2, MX205.2, M207.2, MX207.2
Manufactured after: 5-1-1998

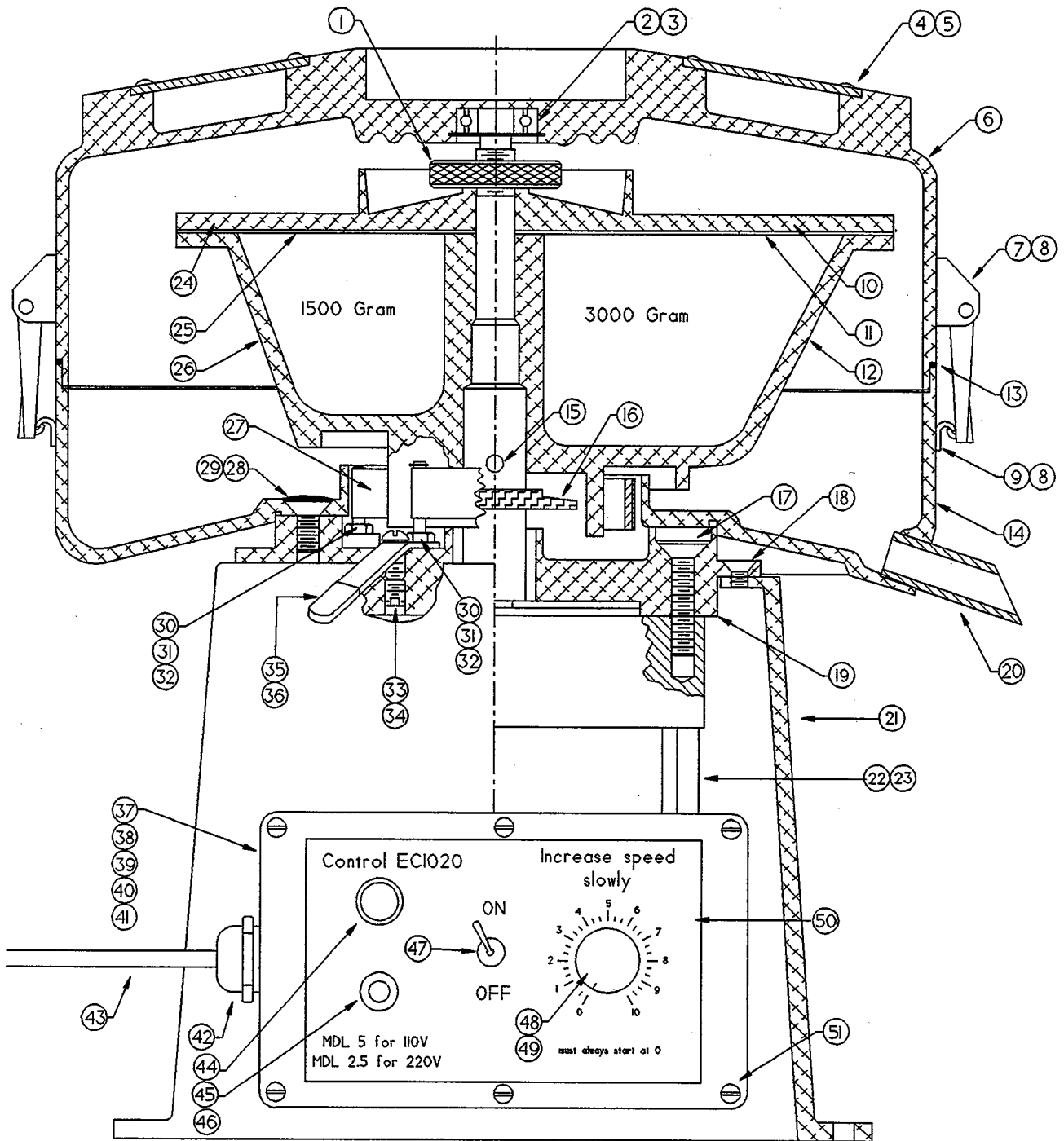
Ref. #	PART NO.	DESCRIPTION	PCS.	OLD PART #.
1	1015P0005	Cover Nut	1	E230
2	1015P0010	Bearing	1	B 1000
3	1015P0011	Retaining Ring	1	SR1000
4	1015P0012	Cover Handle	2	PA156
5	1015P0013	Handle Screws	8	SO15
6	1015P0014	Outer Cover	1	PA13
7	1015P0015	Cover Clamp & Hook	1	CL1000
8	1015P0016	Cover Clamp Screws	8	SO16
9	1015P0015A	Cover Clamp Assy.,all Parts for 1 Machine	(2 sets)	CL1000A
10	1015P0004	3000 Gram Cover	1	M 247
11	1085P0000	3000 Gram Filter	1	F 267
12	1015P0002	3000 Gram Bowl	1	M 257
13	1015P0018	O" Ring	1	S 212
13	1015P0019	O" Ring-Viton	1	S 212V
14	1015P0020	Lower Bowl	1	PA 14
15	1015P0021	Drive Pin	1	PA 12-2
16	1015P0031	Flinger, machined alumnium	1	S 213.1
17	1015P0022	Motor mounting Screws	4	SO 18.1
18	1015P0023	Base Screws	5	SO 19
19	1015P0024	Motor Base Plate	1	PA 15.1
20	1015P0025	Spout	1	PA 28
21	1015P0026	Base	1	PA 34
22	1015P0027	Motor Assy.w/Shaft,Explo-proof for 115 Volt	1	M 1010
22	1035P0001	Motor Assy.w/Shaft,Explo-proof for 230 Volt	1	M 1015
23	1015P0028	Motor Assy. w/Shaft, open for 115 Volt	1	M 1011
23	1035P0002	Motor Assy. w/Shaft, open for 230 Volt	1	M 1016
24	1015P0003	1500 Gram Cover	1	E 245
25	1080P0000	1500 Gram Filter	1	F 265
26	1015P0001	1500 Gram Bowl	1	M 255
27	1015P0032	Brake Band	1	PA 29
28	1015P0029	Bowl mounting Screws	3	SO20
29	1015P0030	Epoxy Seal	Kit	A12
30	1015P0033	Lock Nut	2	NO 5
31	1015P0034	Brake Retaining Pins	2	PA 16
32	1015P0035	Retaining Ring	1	SR 1002
33	1015P0036	Handle Pivot Screw	1	SO 21
34	1015P0037	Handle Pivot Lock Screw	1	SO 22
35	1015P0038	Brake Handle	1	PA 27
35A	1015P0040	Brake Handle Assy. w/ref.# 30,31,32,35,36	1	PA 27A
36	1015P0041	Plastic Handle Cover	1	SO 24
37	1015P0046	Electric Control,complete	1	EC 1020

Ref.#

Electric Control EC 1020

	<u>PART NO.</u>	<u>Description</u>	<u>Pcs.</u>	<u>OLD PART #.</u>
38	1015P0047	Electronic Board	1	E 101
39	1015P0048	Enclosure	1	E 102
40	1015P0049	Pipe Nipple	1	E 103
41	1015P0050	Front Panel	1	E 104
42	1015P0051	Cord Grip	1	E 105
43	1015P0052	Power Cord for 115 Volt Machines	1	E 106
43	1015P0053	Power Cord for 230 Volt Machines	1	E 107
44	1015P0054	Pilot Light for 115 Volt Machines	1	E 108
44	1015P0055	Pilot Light for 230 Volt Machines	1	E 109
45	1015P0056	Fuse Holder	1	E 110
46	1015P0057	Fuse 5Amp for 115 Volt Machines	1	E 111
46	1015P0058	Fuse 2.5Amp for 230 Volt Machines	1	E 112
47	1015P0059	Switch	1	E 113
48	1015P0060	Potentiometer	1	E 114
49	1015P0061	Knob	1	E 115
50	1015P0062	Decal	1	E 116
51	1015P0063	Cover Screws	6	E 117

Always give complete S/N when ordering Parts.



Extractor Parts List Series 5

Scale:

Drawn by:

Date:

Revised: 5/1/98

Ploog Engineering Co. Inc
Crown Point, In. 46307

Drawing Number

PC-1C