

# InSight™

Image Analysis for BMD Tests

**SEE MORE. MEASURE MORE.  
UNDERSTAND MORE FROM EVERY BMD TEST.**

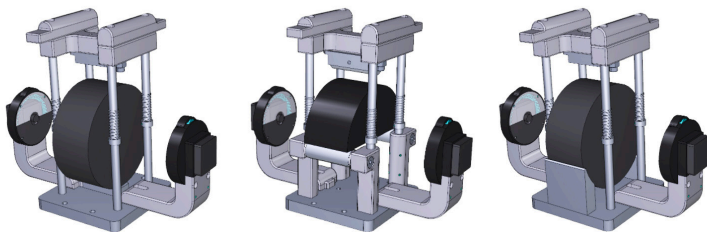
**InSight™ Image Analysis** is a purpose-built imaging and analysis system designed to enhance routine Balanced Mix Design (BMD) testing. By adding synchronized, high-resolution visual data to traditional load-curve results, InSight provides a clearer, more complete picture of how today's complex asphalt mixtures actually behave under load.

Modern asphalt mixes are no longer simple combinations of aggregate and binder. RAP, polymers, fibers, rubber, and other modifiers have fundamentally changed cracking and deformation behavior—yet many BMD outcomes still rely primarily on the shape of a single load curve. That limited view can mask critical differences in specimen behavior and contribute to the high variability (COV) seen across labs.

InSight addresses this gap by capturing and analyzing physical deformation and crack development as the test occurs. Using dual high-resolution cameras, integrated lighting, and AI-driven software, InSight records both sides of the specimen and outputs BMD-specific measurements, strain maps, and synchronized video—turning routine tests like IDEAL-CT and I-FIT into richer, more informative evaluations of mix performance.

Compatible with all major BMD frames, InSight adds powerful visual intelligence without disrupting existing workflows.

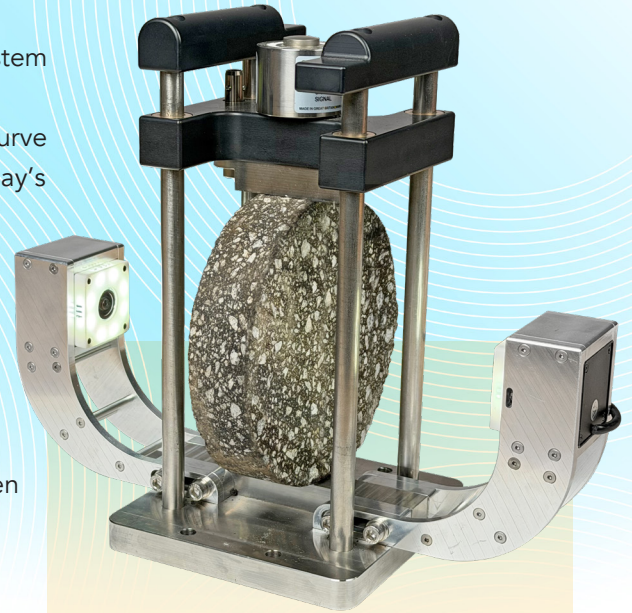
## Get Advanced Image Analysis for 4 BMD Tests!



IDEAL-CT & High Temp IDT

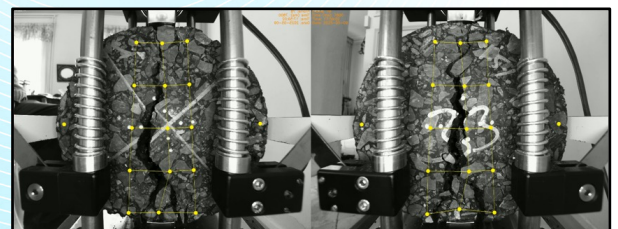
I-FIT

IDEAL-RT



## FEATURES

- ▶ Meets **AASHTO T283 (TSR Test)**, **ASTM D4867**, **EN 12697-12**, and **IDEAL-CT ASTM D8225**
- ▶ **Dual high-resolution** cameras with integrated lighting
- ▶ **AI-powered** image analysis software designed specifically for BMD tests
- ▶ **Simultaneous recording** and analysis of both specimen faces
- ▶ **Measures horizontal** and vertical deformation, strain, speed, and displacement
- ▶ **High-density strain field** visualizations resembling FEA outputs
- ▶ **Telephoto imaging** for detailed crack-tip and notch analysis
- ▶ **Outputs standard BMD results** plus expanded visual and numerical data
- ▶ **Compatible with BMD frames** from Instron, Humboldt, Troxler, Pine, Controls, and Matest



**Standard dot configuration for IDEAL-CT**  
InSight cameras allows you to measure vertical and horizontal deformation, speed, and strain for every selected point.

	INSIGHT SPECIFICATIONS	INSIGHT FOR SERVO-HYDRAULIC SPECIFICATIONS
<b>POWER SUPPLY</b>	115V AC	115V AC
<b>CAMERAS</b>	2 x 16MP (5V)	2 x 16MP (5V)
<b>LIGHTS</b>	2 x LED Ring (12V)	2 x LED Ring (12V)
<b>LOAD CELL</b>	50 kN Button	N/A
<b>SIGNAL CONDITIONING</b>	Internal Resolution 16 Million	N/A
<b>USB HUB</b>	4 x USB 3.2 Port Switchable	4 x USB 3.2 Port Switchable
<b>SOFTWARE PLATFORM</b>	Windows 10 or Higher	Windows 10 or Higher
<b>DIMENSIONS</b>	35W x 28H x 16D cm	20W x 20H x 16D cm
<b>WEIGHT</b>	7.2 kg	4kg

**DISTRIBUTED BY:** Instron, Inc. | Research Triangle Park, NC | phone: 919.875.8371 | email: [sales@Instron.com](mailto:sales@Instron.com) | visit: [www.Instron.com](http://www.Instron.com)  
and HMA Lab Supply | Research Triangle Park, NC | phone: 984.242.0470 | email: [hma@Instron.com](mailto:hma@Instron.com) | visit: [www.hmalabsupply.com](http://www.hmalabsupply.com)